

# BEACH OVERVIEWS

---

## Lynn and Nahant

### Red Rock Beach, Lynn Beach, Nahant Beach, King's Beach



Aerial view of King's Beach in Lynn.

From the DCR website describing Lynn Shores and Nahant Beach Reservation:

Open year round, dawn to dusk. Boat ramps provide public access to Lynn Harbor. Public swimming at Long Beach and King's Beach. Fee for parking at Long Beach, 8:00am - 5:00pm, May - Sept. An expansive seascape can be viewed from over four miles of waterfront that is managed under public ownership. A promenade extends along the two-mile length of the two reservations at the edge of Nahant Bay and is available year round for activities such as walking, jogging and bicycling. Vast areas of hard-packed sand are exposed at low tide which can be accessed at King's Beach and Long Beach on Nahant Bay as well as near the boat launching area on Lynn Harbor. Other interesting natural

features include a mile-long system of fragile sand dunes parallel to Long Beach, and tide pools at Red Rock Park that are often filled with colorful marine plants and animals.

Ball fields, racquetball and tennis courts are available near Nahant Rotary. A tot lot is located near park headquarters at Ward Bathhouse where a visitor center, showers, and sanitary facilities are available free of charge. A comfort station is located at Long Beach in Nahant Beach Reservation and lifeguards supervise areas of that waterfront during July and August. A parking lot with a capacity of 1,300 vehicles is available at Long Beach for which a fee is collected from May through September. Ample on-street parking along Lynn Shore Drive is available for visitors to King's Beach and Red Rock Park. There is no public toilet facility at Lynn Shore Reservation and there is no lifeguard program at King's Beach. The parking lot at the public access boat ramp has a capacity of 70 vehicles with trailers.

From the blog "Off the Beaten Path":

The Nahant side (Long Beach) provides the most convenient access. The parking lot runs right along the beach, so it's simply a hop and a skip onto the sand. The reservation supports numerous activities such as jogging, walking, biking, kite flying, and swimming. If your intention is a lack of activity, there is plenty of space on the sand to kick back and relax in the sun.



Long Beach, Nahant

# METROPOLITAN BEACHES COMMISSION

## Beach Overviews

Nahant was nothing more than a grazing area for livestock owned by Lynn residents during the early colonel era. By 1640 a small-boat fishing industry flourished. In 1657 the area was marked out in to equal lots for the residents of Lynn. To claim the lots they were required to clear the area of wood within a six year period.

The 1800's turned Nahant into a popular resort town. In 1853 the largest hotel complex on the coast was built at the site of the current beach. The Coast Guard Station #24 was built in 1898 and stood until 1963. The strip remained a tourist destination until the turn of the century.

In the early 1900's the Metropolitan District Commission purchased the property which is now the reservation, demolishing the hotels and making way for sun worshipers. Nahant it self is now a residential area with homes covering what seems to be almost every inch of space.

Additional notes from [boston.citysearch.com](http://boston.citysearch.com):

King's Beach: beautiful view of the Boston skyline, good place to see the sunsets. However, the high tide usually reaches all the way to the sea wall.

Long Beach: swimming floats are not allowed, but the area near the bathhouse is designated for windsurfing.

Additional Information:

In 2003, a State Senate Bill was introduced by Senator McGee to improve trash collection at Long Beach. The bill made companies collecting parking fees near the beach responsible for trash collection. No record of this bill was available after July 31st, 2003 when it was submitted to the Senate Committee on Ways and Means. (Bill information compiled using LexisNexis).



DCR map of the Lynn Shores and Nahant Beach Reservation. The entire beach from Lynn Beach to Long Beach may be referred to as 'Long Beach' or 'Nahant Beach' in different reviews or descriptions.

# METROPOLITAN BEACHES COMMISSION

## Beach Overviews

### Revere

#### Revere Beach



An aerial view of North Beach, from [www.revere.org](http://www.revere.org)

of lounging space for the masses. Picnickers sit at tables and wage battles with seagulls. Although amenities include a snack bar, no trip to Revere would be complete without a visit to Kelly's Roast Beef. Despite its name, this local institution is also famous for fried fish and clams.

From Wikipedia:

The Beach began to deteriorate in the 1950s, and by the early 1970s had become a strip of honky tonk bars and abandoned buildings. The "Great Blizzard of '78" proved to be the final death knell for the "old" Revere Beach, as many of the remaining businesses, amusements, pavilions and sidewalks and much of the sea wall were all destroyed. The Beach was the focus of a major revitalization effort by the Metropolitan District Commission and the City

in the 1980s and was officially reopened in May 1992. It now

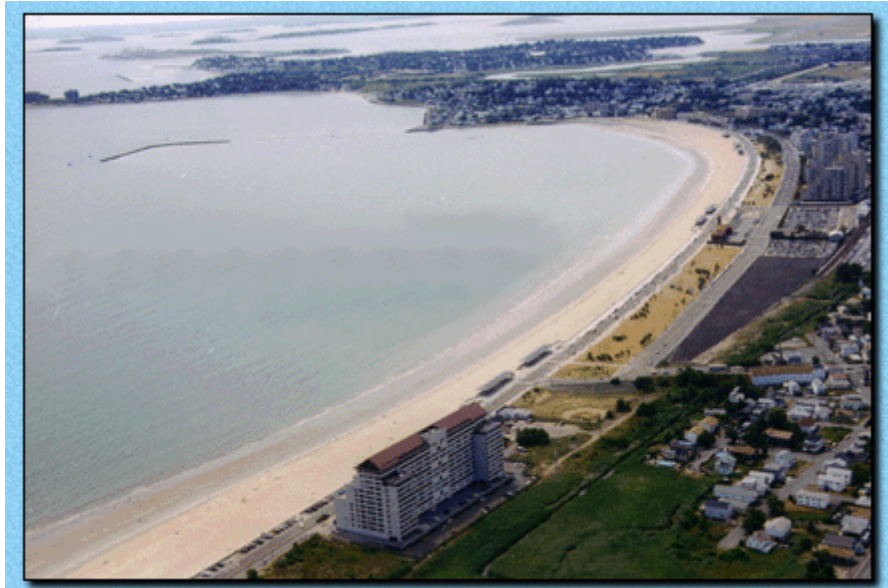
boasts high rise housing units, a resanded beach, restored pavilions and a renovated boulevard. Revere commemorated the centennial of the first opening of Revere Beach on the weekend of July 19, 1996. On July 26, 2004, Revere Beach was designated a National Historic Landmark.

From the DCR website:

Open year round, dawn to dusk. Lifeguards are on duty from late June to early September. Revere Beach, the oldest public beach in America, celebrated its 100th anniversary in 1996. Today, this beach boasts miles of shoreline which welcomes throngs of visitors every summer. Along the boulevard there is a bandstand for summer concerts, a bathhouse and many shade shelters. Revere Beach is very accessible by public transportation which makes it a popular spot for people from all around metro Boston.

From Citysearch.com:

Revere no longer has its famous amusement rides, but it still offers plenty



An aerial view of South Beach, from [www.revere.org](http://www.revere.org)

# METROPOLITAN BEACHES COMMISSION

## Beach Overviews

### Winthrop

#### Winthrop Beach



An aerial view of Winthrop Beach, from photolyon.com. A corner of one of the breakwaters is visible in the bottom left of the picture.

From GoCityKids Boston:  
<http://www.gocitykids.com/>

Winthrop Beach, maintained by DCR, is actively used for swimming, sunning, kayaking, canoeing, walking, picnicking, and volleyball. Offshore breakwaters known as the "Five Sisters" help protect Winthrop Beach from coastal storm damage.

Limited curbside parking is available. The beach is accessible via Point Shirley or Winthrop Beach bus service from the Blue Line Orient Heights Stop.

Excerpts from a report presented to the Massachusetts Coastal Hazards Commission by Joe Orfant of DCR on 4/10/2006 ([http://www.mass.gov/czm/chc/meetings/present/orfant\\_winthrop\\_4-10-06.pdf](http://www.mass.gov/czm/chc/meetings/present/orfant_winthrop_4-10-06.pdf)):

Without a doubt, Winthrop Beach has proven to be the most lengthy, complex and difficult project of the Boston Harbor Beaches Program. The 1993 Plan for the Future of the Boston Harbor Beaches proposed an ambitious program of landscape and related amenities to improve the appearance, access and the overall beach-user experience at the Harbor Beaches, but the problem at Winthrop is of a far greater magnitude than a shabby appearance or lack of benches.

Its open ocean frontage exposes it to punishing storms. In 1898 the Beach was transferred to the Metropolitan Parks Commission and the original seawall was constructed, and neighboring natural sources of sediment necessary to replenish the beach disappeared under stone armoring. Over the following century, additional shore protection structures were constructed to tame storm energy.

But storm driven waves easily overwhelm existing shore protection features along the



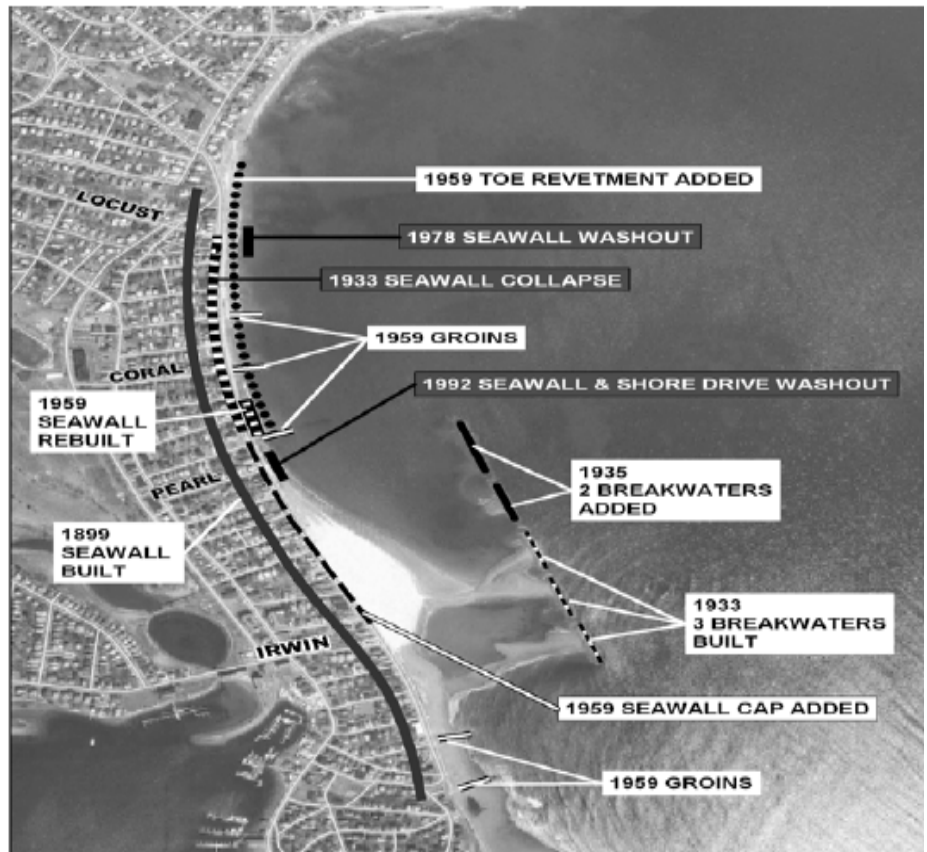
The Winthrop Seawall during a winter storm.

# METROPOLITAN BEACHES COMMISSION

## Beach Overviews

eroded beach resulting in overtopping, flooding and frequent damage.

Today, approximately 4500 people live in the immediate vicinity of Winthrop Beach, about 25% of the total population of the town in a neighborhood of modest, affordable homes convenient to downtown Boston. The Beach roadways, often flooded during frequent coastal storms, provide the only vehicular access to the Deer Island Sewage Treatment Plant, which serves 2,500,000 people in the Metropolitan Boston area. Without adequate shore protection, any investment in Beaches Program styled amenities would be foolish. Winthrop demanded a different strategy. In late 1998, we selected and contracted with a team of engineers and designers headed by Parsons/Brinkerhoff as lead consultant, and including Applied



A historical diagram of seawall improvements since 1899.

Coastal as the marine engineering subcontractor, began a comprehensive reevaluation of the problems and issues producing a Marine Baseline Report and a Conceptual Shore Protection Design Report.

## East Boston

### Constitution Beach

From BostonHarborwalk.com:  
Constitution Beach is one of Boston's most family-friendly waterfront destinations. Having undergone complete rehabilitation in 1996 under the Commonwealth's "Back to the Beaches" program, the beach features landscaping improvements, a large playground, a picnic area, tennis and handball courts, shade shelters and foot showers. An award winning pedestrian overpass across the MBTA tracks connects the local community to the redesigned beach and park, and creates a welcoming gateway. Constitution Beach is also one of the City's best locations for



# METROPOLITAN BEACHES COMMISSION

## Beach Overviews

swimming, with lifeguards on duty during the summer season.

From Wikipedia:

Constitution Beach is a small, crescent-shaped, sandy beach located in the Orient Heights section of East Boston, a neighborhood in Boston, Massachusetts, USA. Known to locals as "Shays Beach," the most distinctive feature of the beach is that it directly faces part of Logan Airport, so that airplanes taking off and landing on Runways 22L and 22R are -- at about 2,000 feet away -- prominently visible and audible.



The beach, which is about .25 of a mile (400m) long, is located in a protected inlet so the water, though part of the Atlantic Ocean, is always relatively placid. There are bathhouse facilities on the beach, as well as a snack bar, a children's play area, handball courts, basketball hoops, tennis courts, softball fields and an ice rink. Constitution Beach and its facilities are located on 28 acres and were constructed in the early 1950s. The overpass that was built at the time, which allows pedestrians to cross over subway tracks to reach the beach from busy Bennington Street, had begun to deteriorate in the 1990s and was replaced by a new structure.

## South Boston

### Carson Beach to Pleasure Bay

South Boston includes several beaches from Carson Beach to Pleasure Bay. Included are the L St and M St beaches, as well as the City Point Beach.



### Carson Beach

Citysearch:

One of Southie's more popular beaches offers plenty of activities for athletic types. Carson is now swimmable, a boast it couldn't make back in the mid '90s when sewage overflows forced the MDC to shut it down. It's come a long way since then, with a renovated bathhouse and other upgrades. Lifeguards are now on duty during open hours. Along with swimming and sunbathing, there are kayaks and other beach games for rent and nets to play volleyball.

# METROPOLITAN BEACHES COMMISSION

## Beach Overviews

### L St. Beach

CitySearch:

Not just for die-hard winter bathers, this Southie landmark is also popular with city dwellers seeking privacy. This beach is not nearly as famous as the "L Street Brownies" who swim in its waters. The group of die-hard bathers who frolic in the ocean year-round are members of the L Street Bathhouse. A wooden wall extends from the bathhouse to the ocean, giving bathers privacy. Rec facilities include saunas, steam rooms, gymnasiums, aerobic classes, a snack bar and a public boat launch.

### Pleasure Bay

Citysearch:

A favorite among swimmers also offers a pleasant footpath to the lighthouse and Castle Island. The beach is popular with swimmers because a protective causeway encloses the bay, curbing waves and water pollution. If you're not a water baby, try walking the man-made Head Island Causeway footpath to Head Island Lighthouse and across to Castle Island and Fort Independence. Facilities include a lifeguard, restrooms, snack bar, benches, public landing and public telephones.



From DCR:

Pleasure Bay, the M Street Beach and Carson Beach form a three mile segment of parkland and beach along the South Boston shoreline of Dorchester Bay. Carson Beach offers some beautiful views and great public amenities: a rehabilitated Mothers' Rest, public restrooms, exhibit space, first aid and lifeguard functions, while the outdoor courtyards allow space for passive recreation. Carson Beach also features a walkway which allows one to walk, bike, or run along the water's edge from Castle Island to the Kennedy Library.

## Dorchester

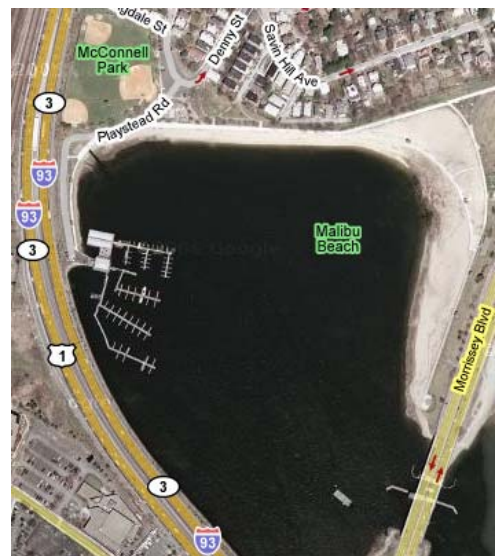
### Malibu, Savin Hill, and Tenean Beach

#### Malibu and Savin Hill Beaches

From the Boston Harborwalk

[www.bostonharborwalk.com/placestogo/location.php?nid=2&sid=13](http://www.bostonharborwalk.com/placestogo/location.php?nid=2&sid=13)):

Malibu and Savin Hill Beaches are great sandy spots for summer sunbathing. Substantial upgrades include a new ADA-compliant promenade along the beach, providing superb views of the Harbor and access to a wide section of the waterfront. A new playground, new sand, new lighting and additional landscaping add to the atmosphere at these beaches. Malibu Beach offers protected swimming and a bathhouse. Savin Hill Beach has a tot lot, baseball fields and a protected swimming area.



Google Map of Malibu and Savin Hill Beaches.

# METROPOLITAN BEACHES COMMISSION

## Beach Overviews



Google Map of Tenean Beach.

### Tenean Beach

From the Boston Harborwalk  
([www.bostonharborwalk.com/placestogo/location.php?nid=2&sid=14](http://www.bostonharborwalk.com/placestogo/location.php?nid=2&sid=14)):

Tenean Beach, featuring a stunning view of Downtown and the whimsical Boston Gas Tank, is one of the best-kept secrets along the HarborWalk. New water fountains, bike racks, shade shelters, picnic tables, historic lighting, and beach sand have all been added as part of the Commonwealth's "Back to the Beaches" program. A new playground, boardwalk, promenade, and new sand help to make Tenean Beach a fun destination for both visitors and local residents looking for a change of scenery.

### Quincy

### Wollaston Beach

From The Boston Harbor Association (tbha.org):

Wollaston Beach is the largest Boston Harbor beach, providing more than one and a half miles of shoreline access. This urban beach features a continuous walkway, seawall, and concession stands on the land side of Quincy Shore Drive. The Brett Bathhouse contains outdoor showers and enclosed changing areas. Easy access is available to park areas and a new tot lot at Caddy Park. Recent improvements of Wollaston Beach include new sand and improved handicapped access. Future plans to be completed within three years include additional resanding, traffic calming measures and new, safer pedestrian walkways and crossings that will provide access to a multi-use pathway, shade shelters, benches and tot lots. Construction of these improvements should begin in early 2003. Wollaston Beach is owned and operated by the Department of Conservation and Recreation.



From quincyshoredrive.com:



Early action projects at Wollaston, such as the addition of banners, seawall repairs, handicap access ramps, resanding and redesign of the yacht clubs' ramp to improve pedestrian circulation have been completed. In addition, the MDC created Don Kent Park, on the former site of the burned down Ken's Carpetland, an enterprise owned by the family of pioneering and beloved weather broadcaster, Don Kent. Design for the restoration of the Wollaston

# METROPOLITAN BEACHES COMMISSION

## Beach Overviews

Beach and Quincy Shore Drive between Hummock and Furnace Brook Parkway is underway. Rizzo Associates is developing a design which will address pedestrian and vehicular circulation, shoreline protection and beach restoration of Wollaston Beach, and also produce a long term storm water management plan for the area. In addition, a major signage project is being designed to reduce traffic speeds and improve pedestrian and recreational users' safety. Community meetings on this project commenced in the spring 2001 and have continued through 2002 and 2003. In 2005, the majority of the seawalls have been resurfaced and refaced in preparation for the next phase of the project.

### Hull

#### Nantasket Beach

From DCR website on Nantasket Beach:

Open year-round, dawn to dusk. Lifeguards on duty from late June to early September. Nantasket Beach has been a popular summer destination for city dwellers since the middle of the 19th century. The reservation encompasses 26 acres along one and a third miles of oceanfront. The historic Paragon Carousel evokes memories of the area's amusement park history. Band concerts and public dance lessons are popular summertime events.



DCR-supplied picture of Nantasket Beach

From Wikipedia entry on Hull:

Hull features Nantasket Beach, with fine, light gray sand -- generally considered one of the finest beaches in New England. At low tide, there are acres of tide pools. Beginning the community's development as a tourist resort, in 1825 Paul Warrick established the *Sportsman Hotel* on Nantasket Avenue. More hotels were built, and by 1840, steamboats made 3 trips a day between the town and Boston.



Paragon Park c. 1914

Following the crowds onto the boardwalks were gamblers, pickpockets and confidence men, so *Paragon Park* was built as a safe place for those seeking amusement. Called a "marvel of fantasy," it once featured a ride based on the Johnstown Flood. The complex closed in 1984 when the property was sold for condominium development. Today, the only surviving remnants of *Paragon Park* on the boardwalk are the historic carousel and clock tower.

From Everything2.com entry on Nantasket Beach:

Nantasket Beach sits at the edge of the growing town of Hull, Massachusetts. Nantasket is basically the summertime mecca of the inhabitants of the "South Shore" (southern suburban Boston area). The beach offers almost enough room for suburbanites to tan, splash around, surf/body surf, fly kites, and whatnot. There is a lifeguard on duty during peak swimming hours from June to September, and no dogs are allowed on the beach during the summer season. One of the least polluted beaches in the area, it is really the only reliable swimming beach on the South Shore, despite the long shoreline south of Boston.

# METROPOLITAN BEACHES COMMISSION

## Beach Overviews

### **Amusement**

Near the beach, the amusement industry has taken firm root. Among the remains of Paragon Park, the amusement park that graced the shoreline of what is now Hull (then known as Nantasket) until the 1980's when the park was sold and most of the space converted to condominiums.

Today the shore is dotted with arcades, pizza shops, restaurants, bars and specialty shops like Sea Side Kites and a few small art galleries. The area slightly further from the beach is built up with condos, small beach cabins, and an enormous hotel-apartment-restaurant-spa complex. The paragon carousel survives to this day, along with many of the statuettes and playground equipment left over from Paragon Park.



[Nantasket Beach](#)

### **Fort Revere Park**

The nearby Fort Revere Park provides a more historical form of

recreation, with its over eight acres of land. Guests can visit the remains of colonial seacoast fortifications, a historical water-tower, and a military history museum, in addition to picnic and playground facilities. Occasionally events like concerts and outdoor movie showings are held here. Alcohol is strictly prohibited to promote a family atmosphere.